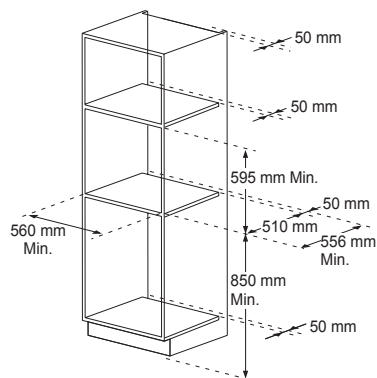
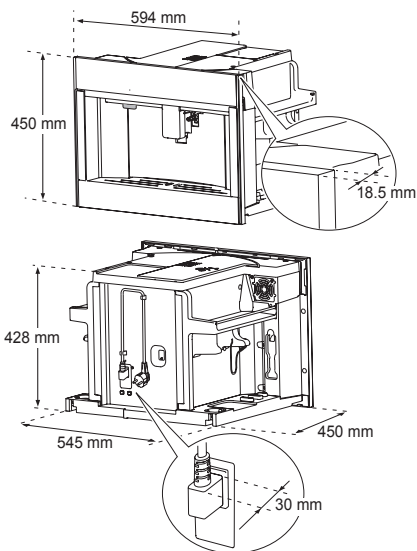


SKSCM2401S

Coffee machine



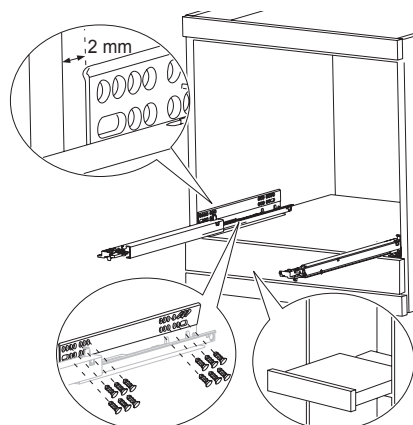
Installation



Notes

Any installation or maintenance must be performed after the appliance has been disconnected from the mains. Kitchen furniture in direct contact with the appliance must be heat resistant (min. 65°C). To ensure proper ventilation, leave an opening on the bottom of the cabinet.

Placement guide



SKSCM2401S

General Properties

Display	4.3" Colour TFT LCD
LED lighting with scenarios	•
Beverages	Espresso, Coffee, Long Doppio+, Americano, Espresso Macchiato , Cappuccino, Cappuccino+, Cappuccino Mix, Latte Macchiato, Flat White, Café Latte, Double Espresso, Hot milk, Hot water
Setting cup volume	4 Level
Flavour intensity of coffee	5 Level
Descaling	•
Save favourites	•
Self-cleaning	•
Removable Steamer	•
Removable drip tray capacity	0.8 l
Height-adjustable coffee/milk dispenser	8 - 14 cm
Coffee bean container capacity (g)	400
Coffee grinding settings	13
Water tank capacity	2.5 L

Technical Specifications

Pump pressure (bar)	15
Power consumption kW	1.35
Required Power Supply	230V, 50Hz
Plug Type	F Type
Power	Electric
Net Weight	20.5



Download
the User's
Manual